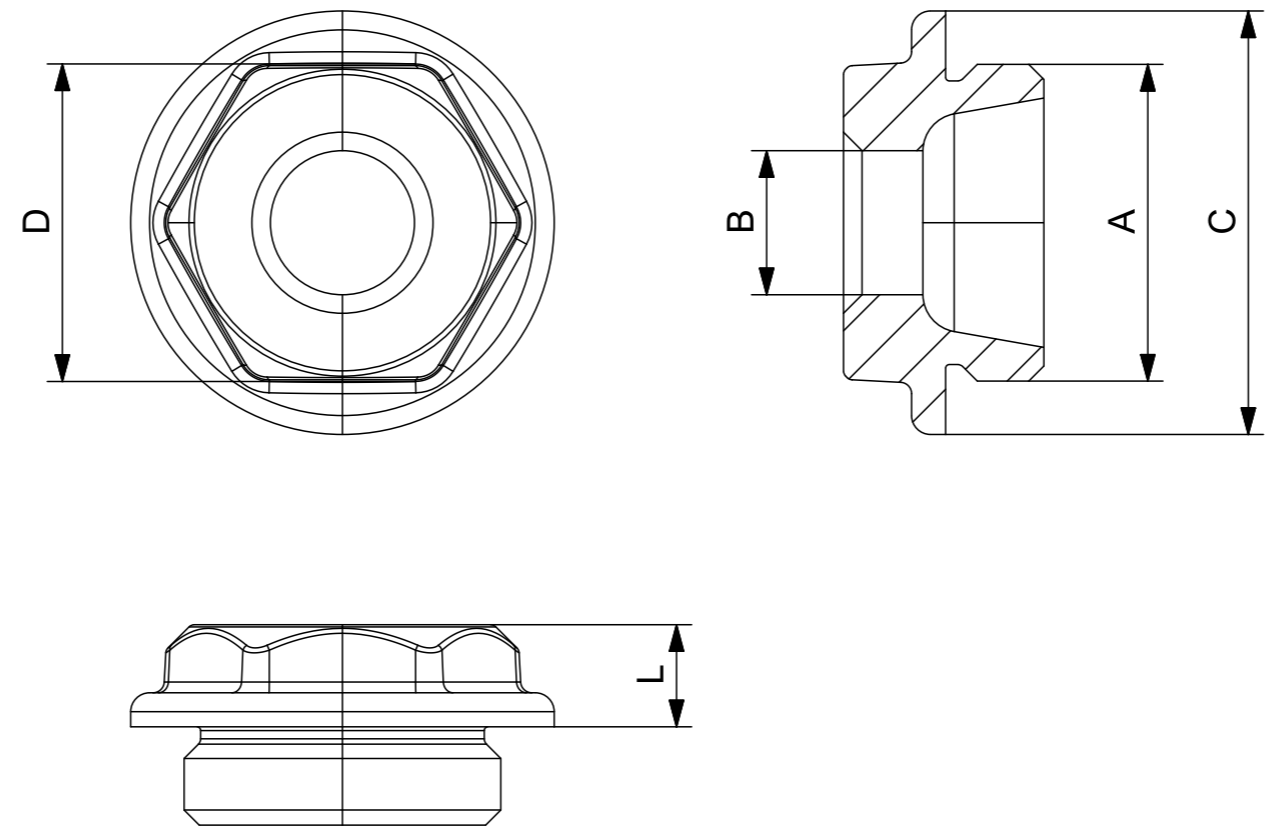


1 2 3 4 5 6 7 8

A
B
C
D
E
F

A
B
C
D
E
F

Notes
Dual dimensions are given in millimetres followed by [inches].
Castrads Ltd, not to be reproduced without written consent.



| | | | | |
|---------|---------|---------|--------|--------|
| A (BSP) | 1.25" L | 1.25" R | 1.5" L | 1.5" R |
| B (BSP) | 0.5" | 0.5" | 0.5" | 0.5" |
| C (mm) | 56 | 56 | 62 | 62 |
| D (mm) | 42 | 42 | 42 | 42 |
| L (mm) | 14 | 14 | 14 | 14 |

| | | | | | | |
|-------------------------------------|---|--|--|--------------------------|------------------------|---------------------|
| Responsible dept. Product | Technical reference: J. Riley | Document type Dimension Drawing | Document status Public Release | Material Steel | Weight 0.2KG | Scale 1:1 |
| Castrads Est. 2006 | Created by: J. Riley | Title, supplementary title Steel Reducing Bush | | CFS/XXGx0.5R-XHx0.5R_PL | | |
| | Approved by: J. Riley | | | | | |

1 2 3 4 5 6 7 8 A3